

SATTTLER

LIGHT IN NEW DIMENSIONS

# MANUFAKTUR & DETAIL



Werbliche Handarbeit



Firmengebäude



Produktionshalle



Showroom



Montagetätigkeit

2023

DECORATIVE



FAVO



PALITO



ANELLO | AKUSTIKSEGEL

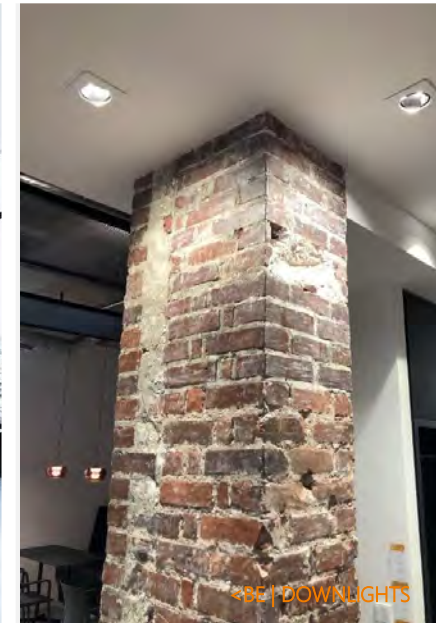


DOPPIO ELLIPSE



AVVENI CONCRETE

# TECHNICAL



PALADIO SYSTEM

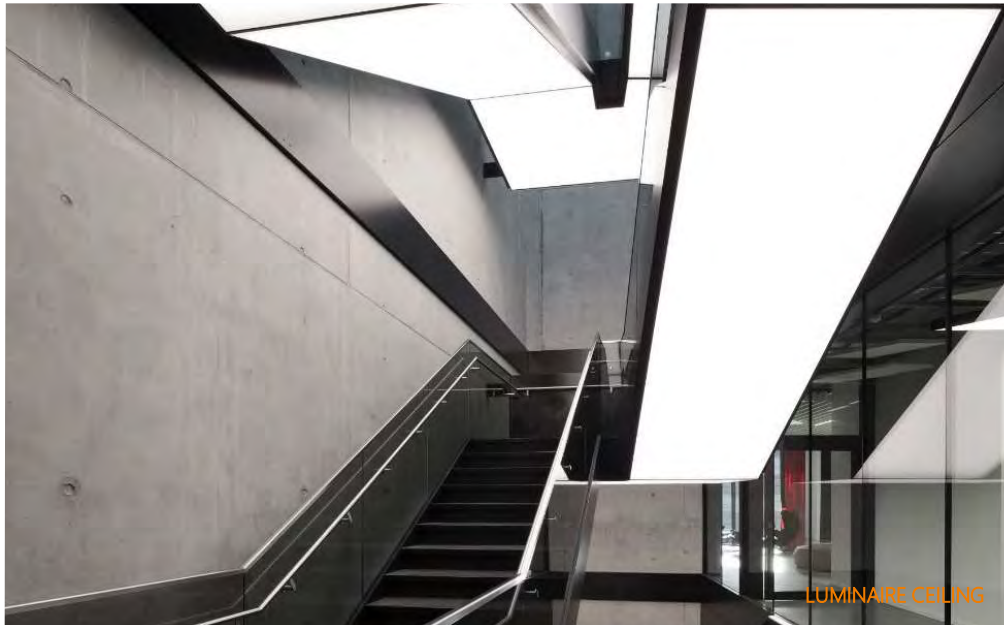
# INDIVIDUAL



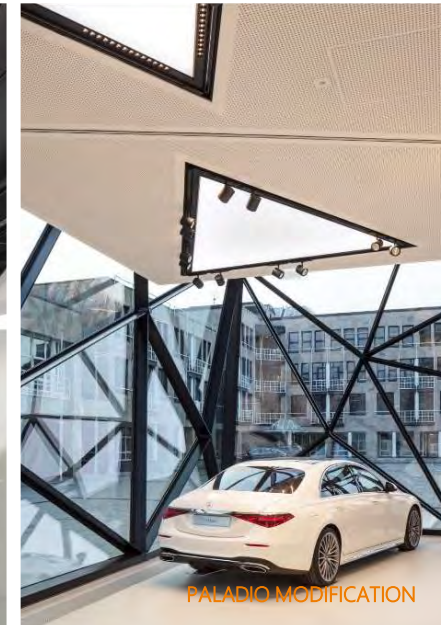
DUETTO CUSTOM



CIRCOLO CUSTOM COLOUR



LUMINAIRE CEILING

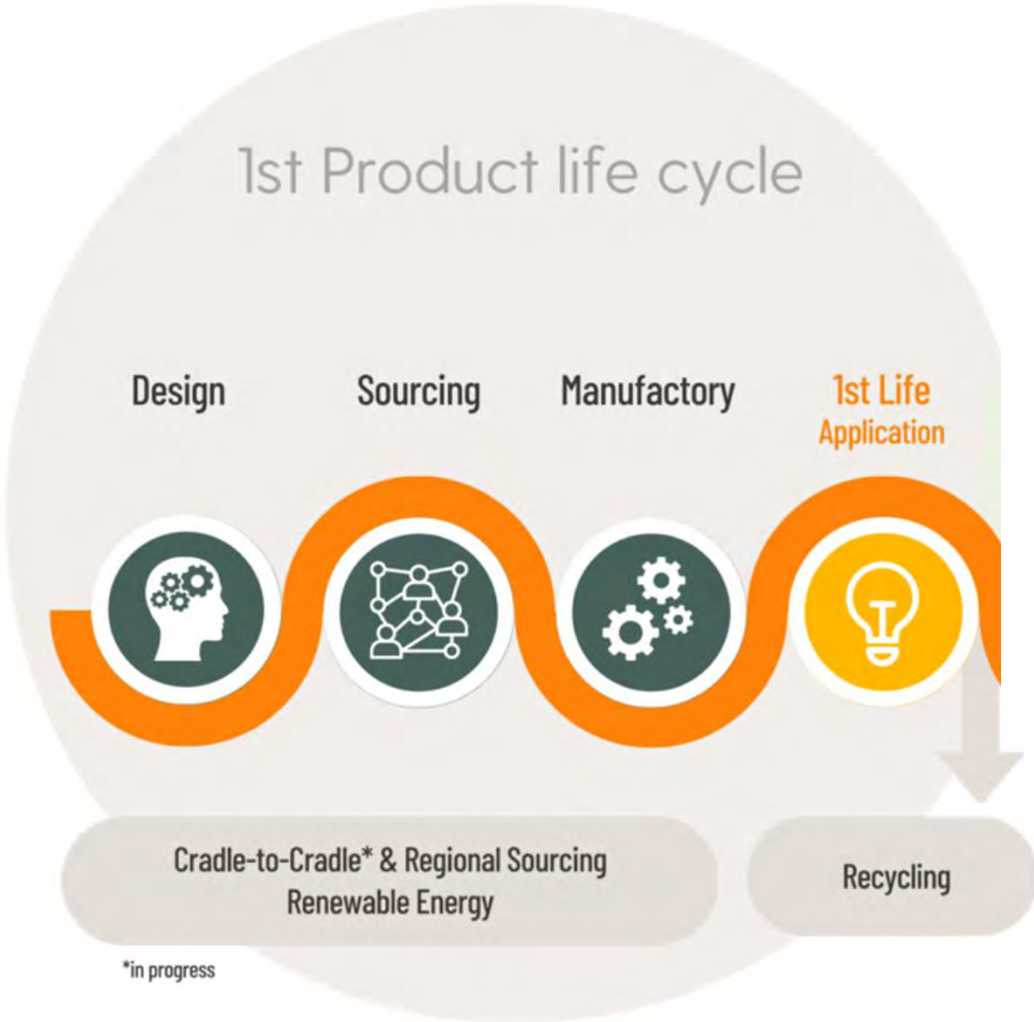


PALADIO MODIFICATION

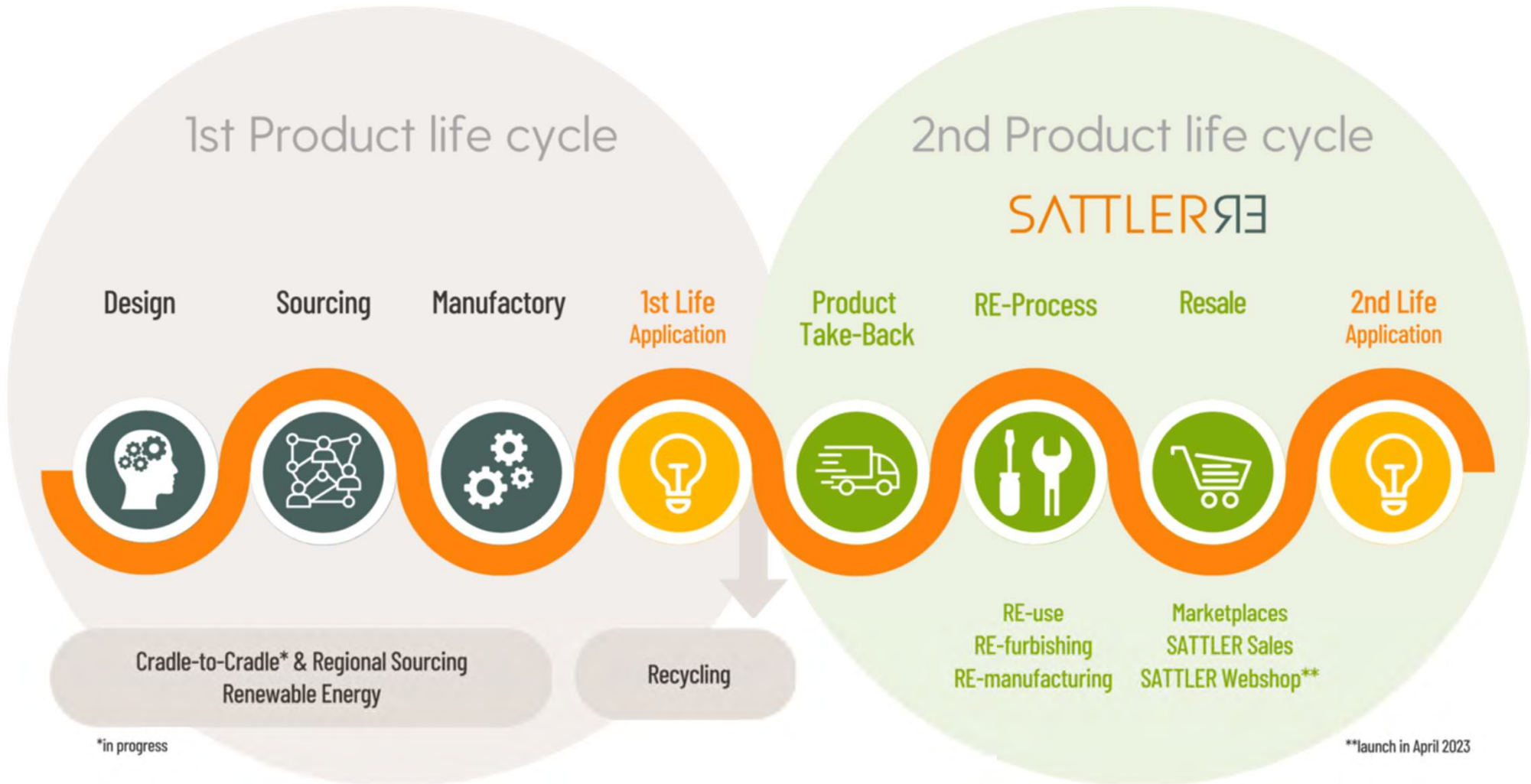


WORLD LARGEST PENDANT LUMINAIRE

# PRODUCT LIFE CYCLE



# PRODUCT LIFE CYCLE



© SATTLER



SLIM Direct 1550  
SPARK OPTIMUS OFFICES | AMSTERDAM | ARCHITECT: Z2 JOLANDA MUILENBURG | PHOTO: VASTGOEDFOTO

SATTLER





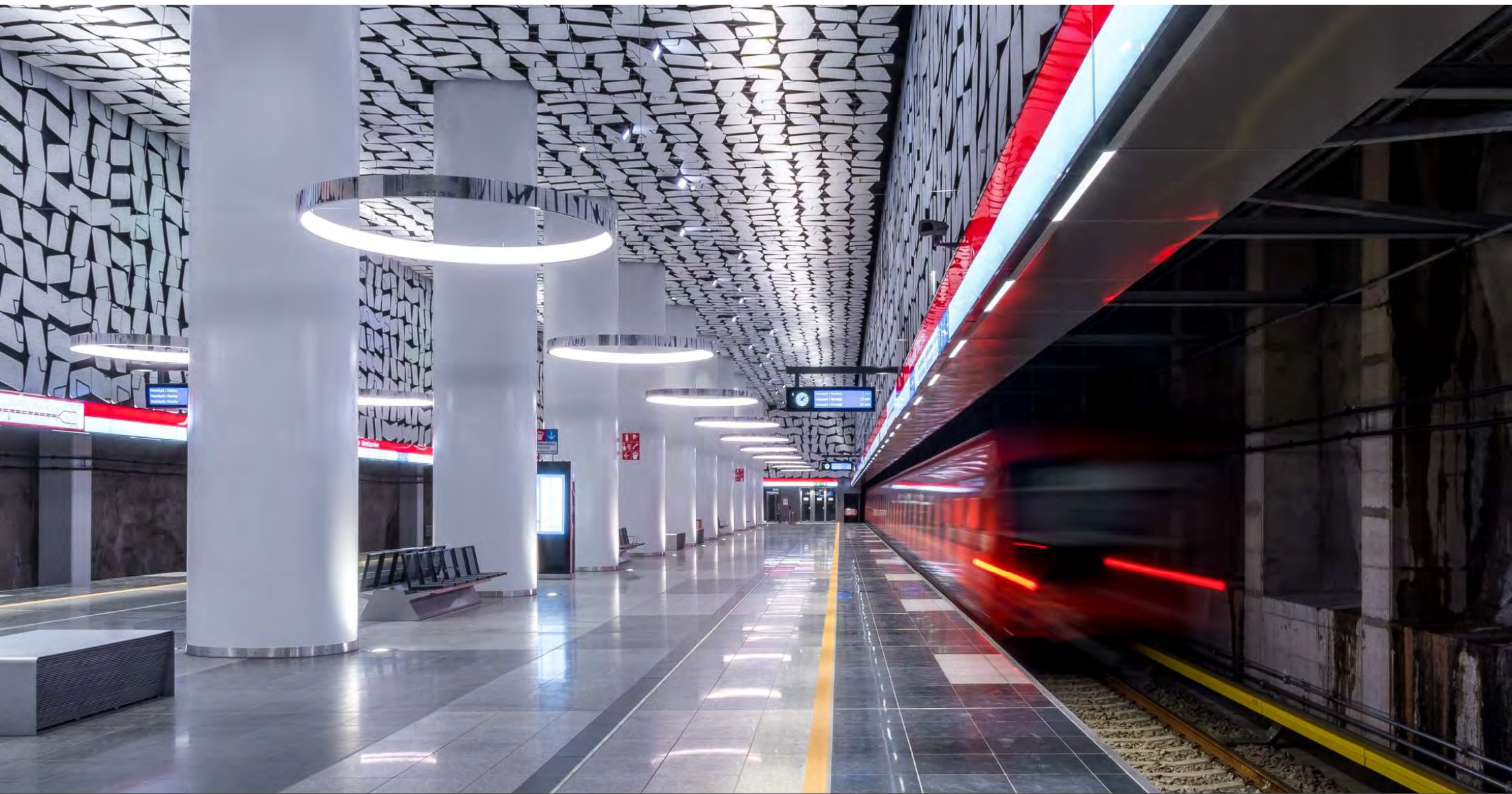
CIRCOLO CUSTOM SOLUTIONS 19 METERS  
ROCHE | SWITZERLAND

SATTLER



AVVENI PENDANT 5  
DEALOGIC | HUNGARY | DESIGN: MASHROOM DESIGN | PHOTO: KRISZTINA FILEP

SATTLER



CIRCOLO  
TRAIN STATION HELSINKI | FINLAND | ARCHITECT: ARKKITEHTITOIMISTO HKP OY | PHOTO: KIM FORSSÉN

SATTLER



SOFT DELTA LIGHT + ACOUSTIC  
INFINITY HEADQUARTERS | AMSTERDAM | ARCHITECT: MVSA-ARCHITECTS | PHOTO: NATHALIE PETERS

SATTLER

Looking forward to  
realize beautiful and  
sustainable projects  
together with you!



# SATTLER

LIGHT IN NEW DIMENSIONS

Sattler GmbH  
Wilhelm-Zwick-Straße 6  
73035 Göppingen  
Germany

[www.sattler-lighting.com](http://www.sattler-lighting.com)