

LIGHT EXPERIANCE EVENT


Castle De Hooge Vuursche, 10.10.2023



INDUSTRIE
LICHT

.hess





Tradition meets innovation since 1948

- the very best lighting solutions,
- unparalleled expression of design and
- professional craftsmanship

COMPANY

Complete portfolio

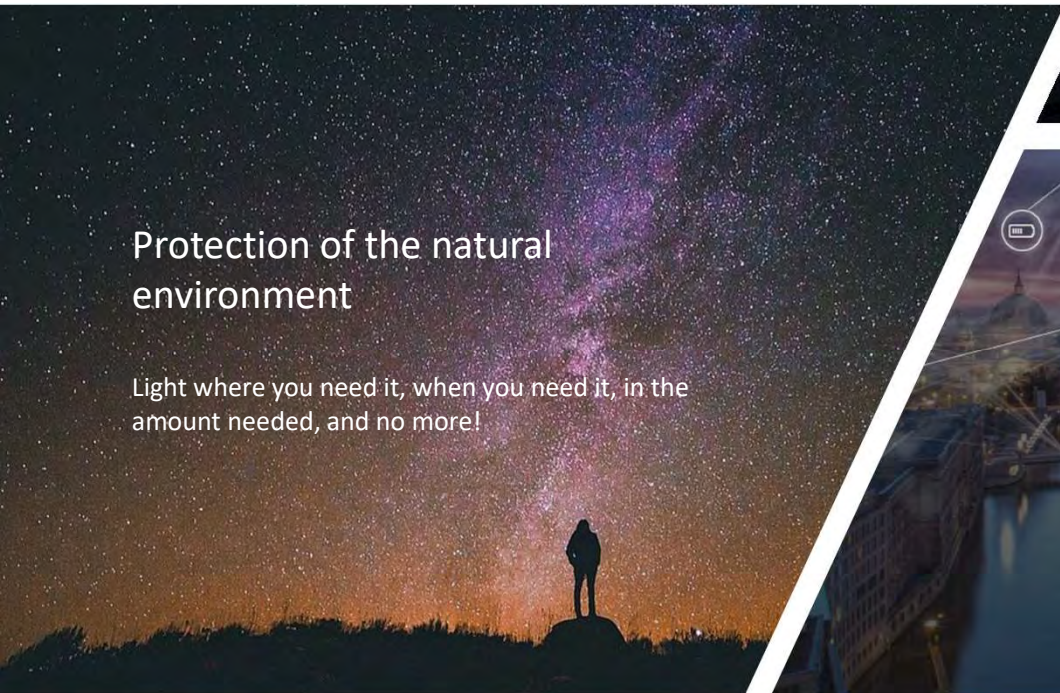
.hess

- Decorative luminaires
- Multifunctional luminaires
- Sophisticated site furnishings

Vulkan seit 1898
Eine Marke von Hess

- Technically functional & decorative luminaires with a clear focus on efficiency









The Kö-Bogen is located on Schadowstraße. Next door, two historical icons are present: the Schauspielhaus (1970) and the Dreischeibenhaus (1960). This forms a unique ensemble that unites different eras.



Digitalisation in Lighting & Integrated Solutions

Connectivity redefined by Hess



CITY ELEMENTS 200-2

Multifunctions

1 Light + Communication

2 Security solutions

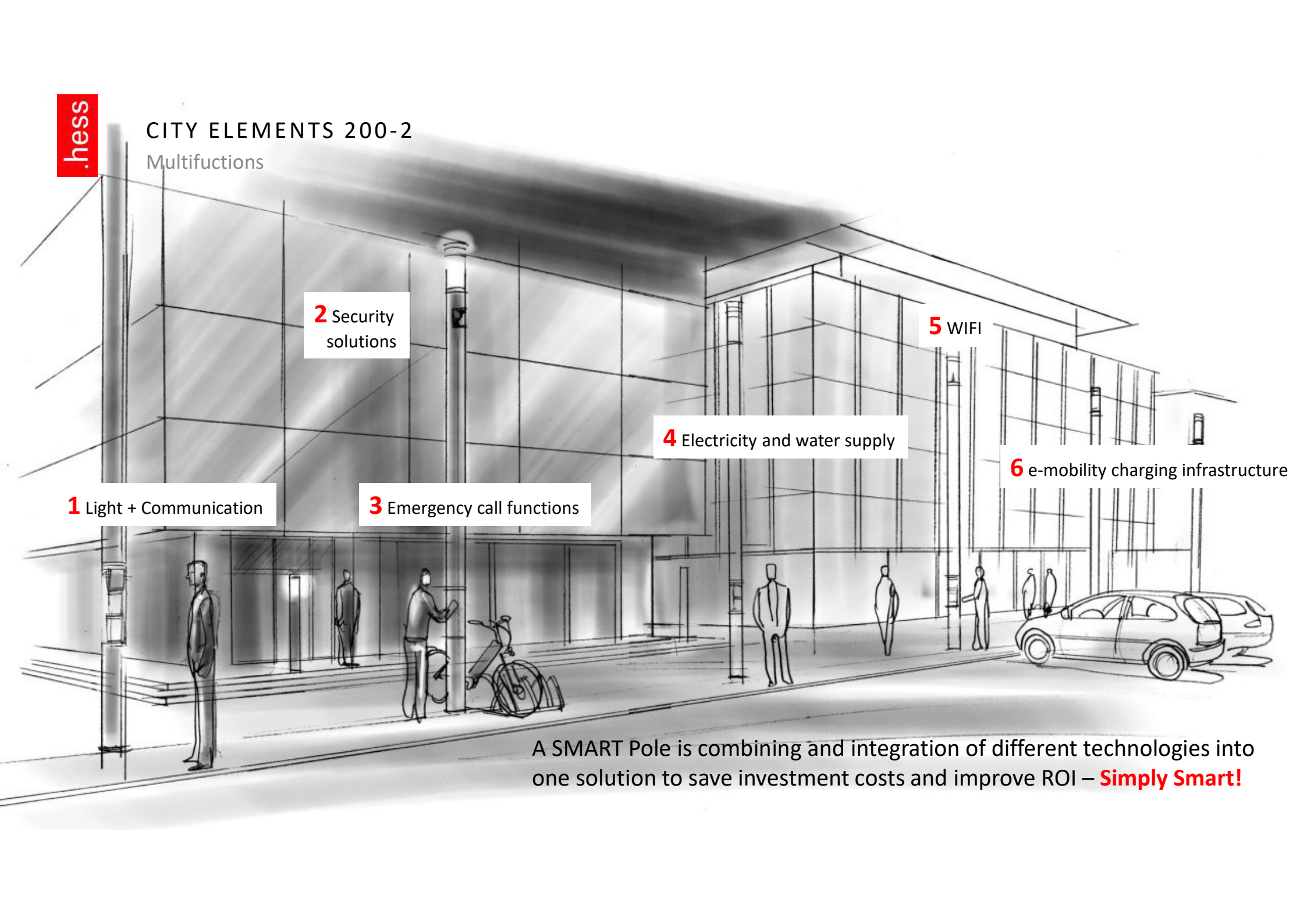
3 Emergency call functions

4 Electricity and water supply

5 WIFI

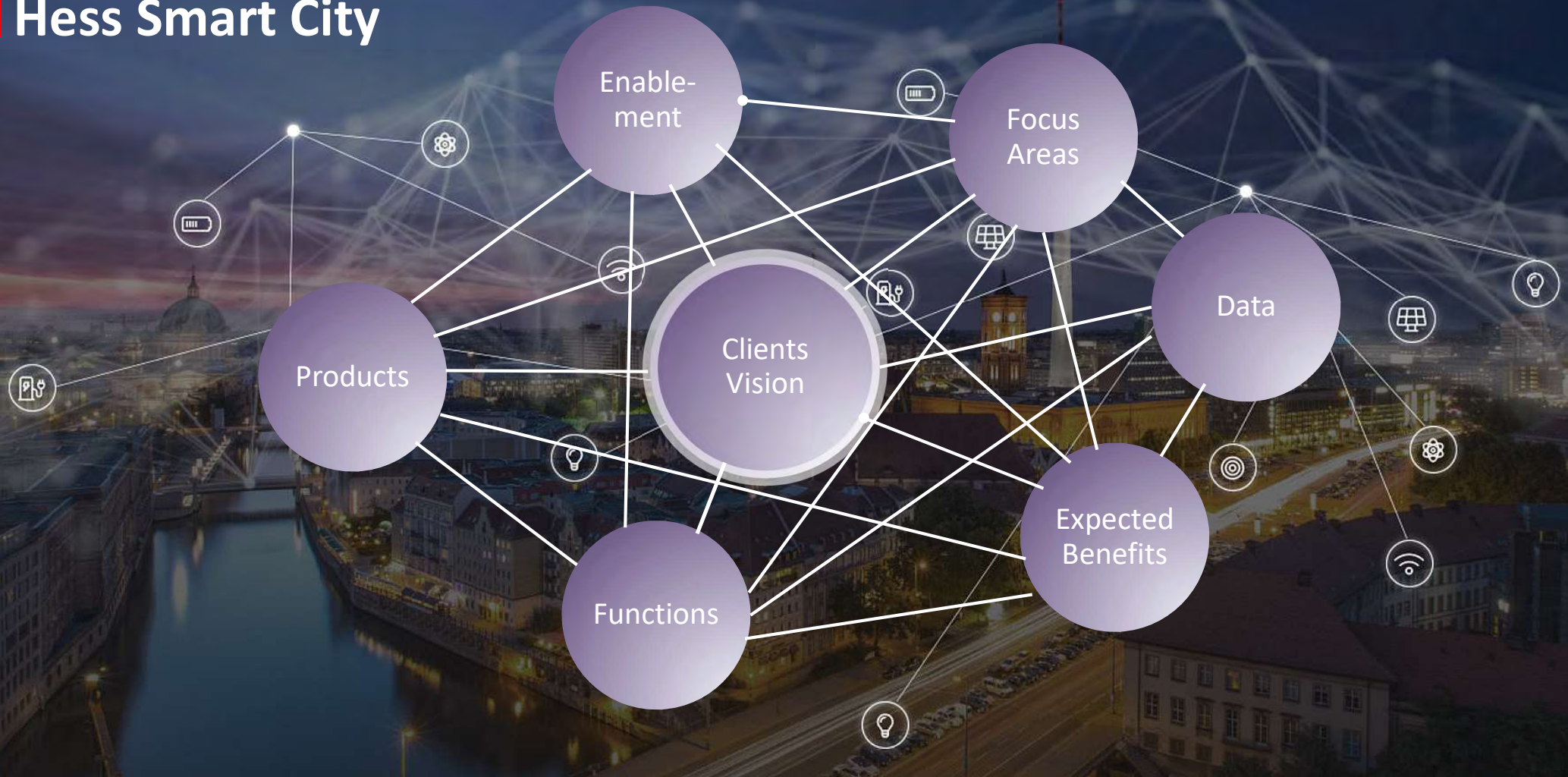
6 e-mobility charging infrastructure

A SMART Pole is combining and integration of different technologies into one solution to save investment costs and improve ROI – **Simply Smart!**





Connectivity redefined Hess Smart City





.hess

IMPRESSIONS



.hess



VILLAGE | Maankwartier, Heerlen . NL

.hess



ARINI | Zandvoort . NL



CITY ELEMENTS, PUNTO, OCTA, JADE 16 | Willy-Brandt-Platz, Lünen . DE





CITY ELEMENTS 200 | Reference project: Campbells Cove, Sydney - AU

SITE FURNISHINGS

Bycycle racks CERES



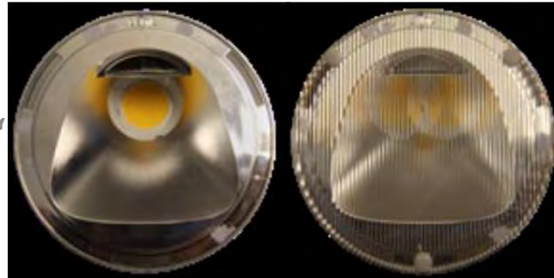




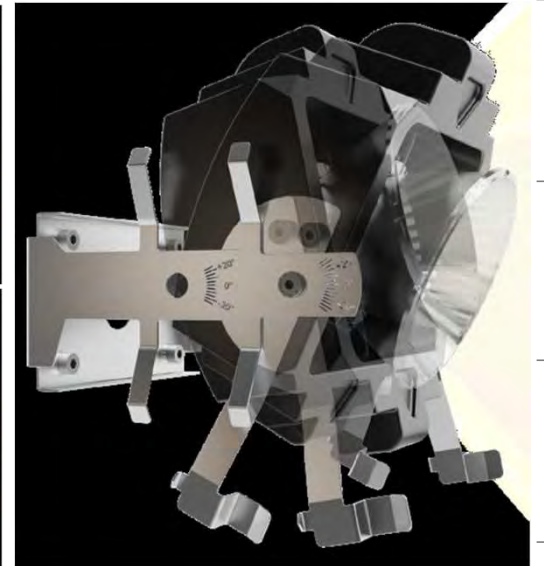
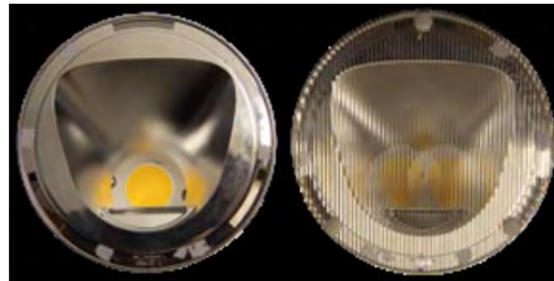
CITY ELEMENTS | Reference: Church . Stuttgart . DE

Lighting technology | BS 500 Intermediate Element

„DOWN“



„UP“



.hess



CITY ELEMENTS | Pedestrian Zone . Singen . DE









.hess



RESIDENZA double | Tegernsee, D

.hess



.hess



Village 300, Grignan Old Town, FR

Experience the light

BE OUR GUEST. Let's get together and discuss the future of lighting.



“ ...You only ever see the products on the internet or in brochures. But it is only after visiting the production that you realise how much craftsmanship is actually involved and how many process steps are necessary to produce a product of such high quality.. ”

Jeroen Müller, Landscape Architect
Juurlink + Geluk, Utrecht.

LIGHT EXPERIANCE EVENT

Castle De Hooge Vuursche, 10.10.2023

INDUSTRIE
LICHT

.hess

THANK YOU!



Georg Sieverding

Head of Sales – International

Phone: +49 151 158 115 42

E-Mail: Georg.Sieverding@hess.eu